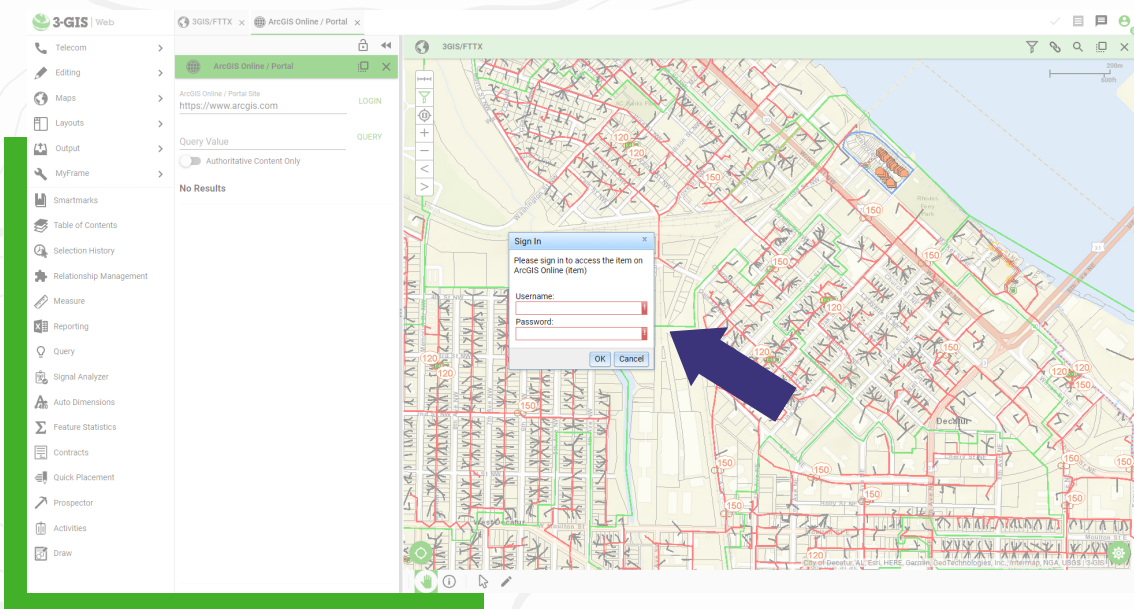


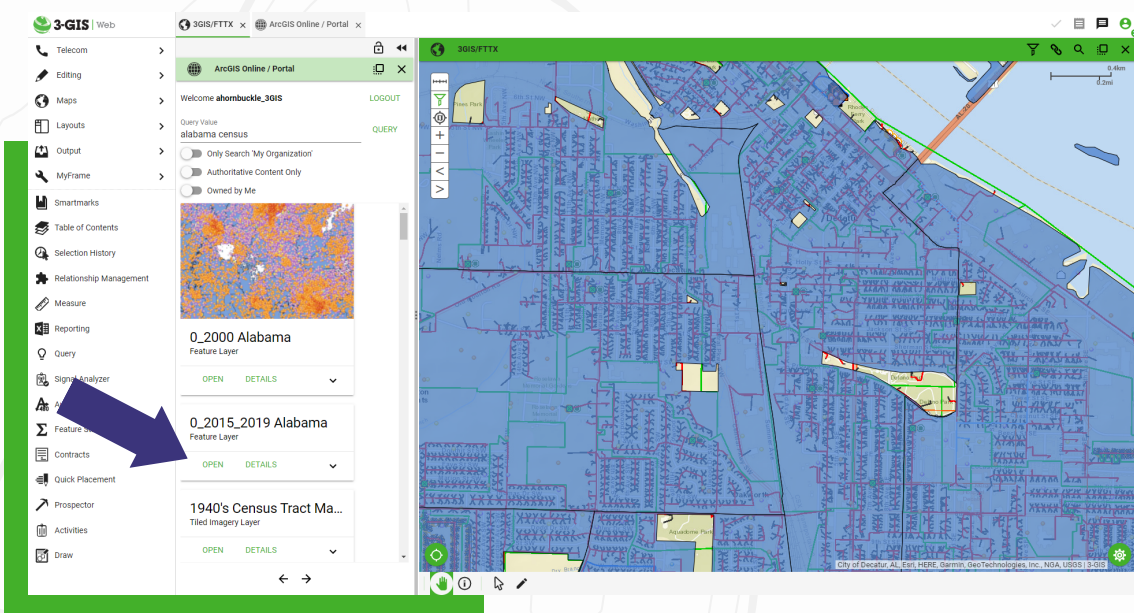
GAIN INSIGHT WITH GIS

There are thousands of resources shared through Esri™ ArcGIS Online. Subscribers* can reference these resources inside 3-GIS | Web in just a few simple steps.

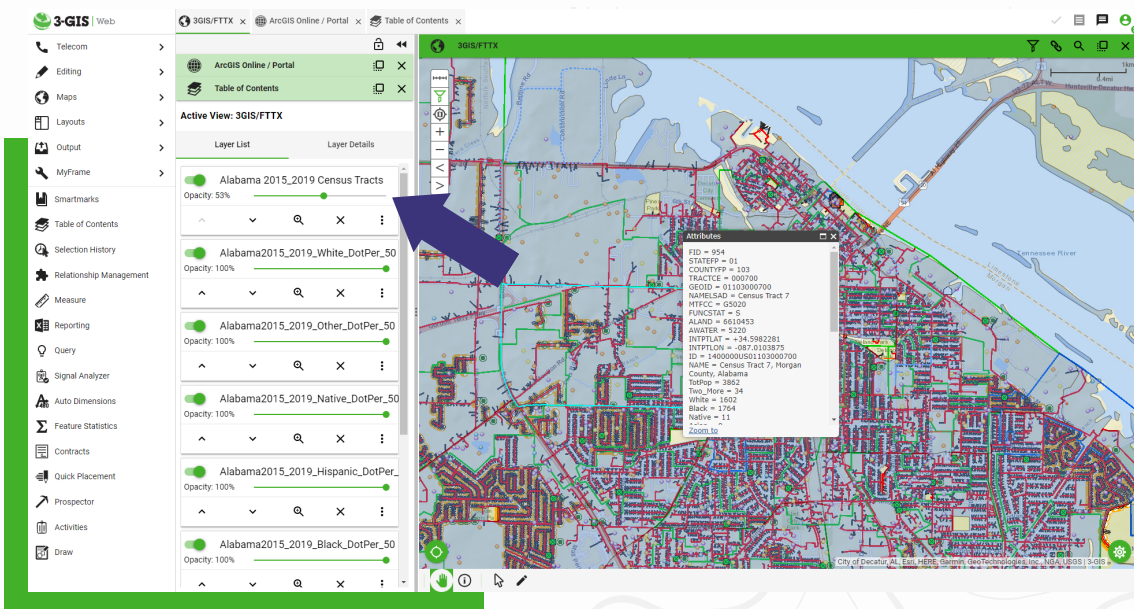
1. Log into ArcGIS Online through 3-GIS | Web



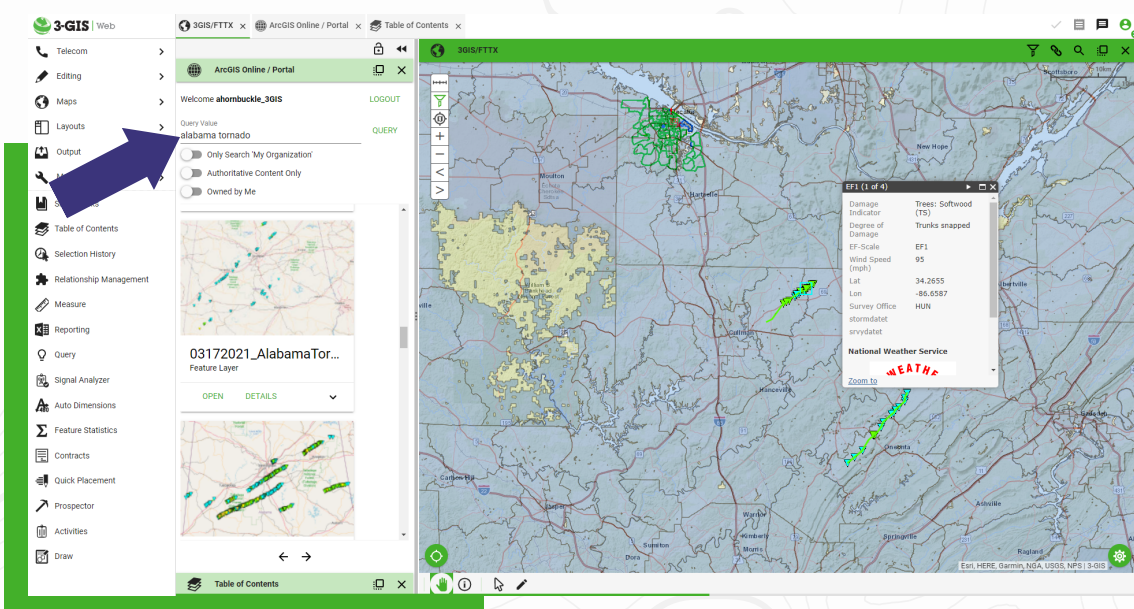
2. Search for and open feature layer content



3. Zoom into and explore the layer



4. Add additional layers to your map as needed



*Data access may require an active ArcGIS Online subscription. Data is subject to removal without prior notice. 3-GIS does not claim ownership of any information presented in the external data layers unless otherwise noted.